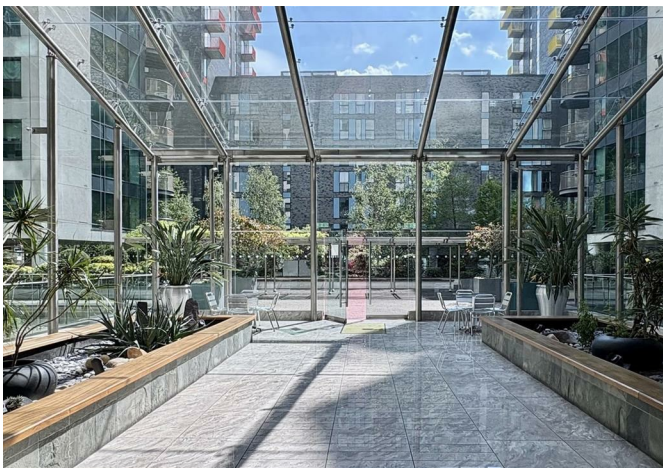




Millharbour, London, E14 9ND
£2,300 Per month



Millharbour, London, E14 9ND

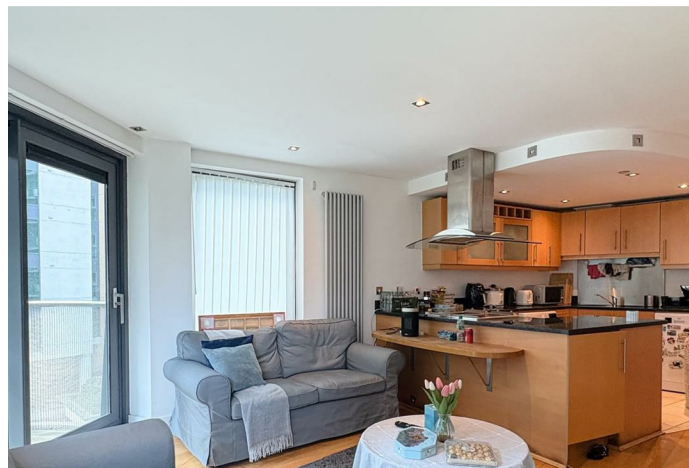
£2,300 Per month

LONG LET - Nestled in the vibrant area of Millharbour, London, this modern apartment offers a perfect blend of comfort and convenience. The property features two well-appointed bedrooms, making it an ideal choice for professionals, couples, or small families seeking a stylish urban retreat.

This apartment is not just a home; it is a lifestyle choice, providing a perfect base for those who wish to enjoy the dynamic atmosphere of city living while having a peaceful retreat to return to. With its prime location and modern features, this property is a must-see for anyone looking to make their mark in London.

Key Features

- Bright Two Bedroom apartment
- 24hr Concierge
- Open plan kitchen/lounge
- Walking distance to Canary Wharf Jubilee Line and Elizabeth Line
- moments away from local shops and amenities
- Fully Furnished

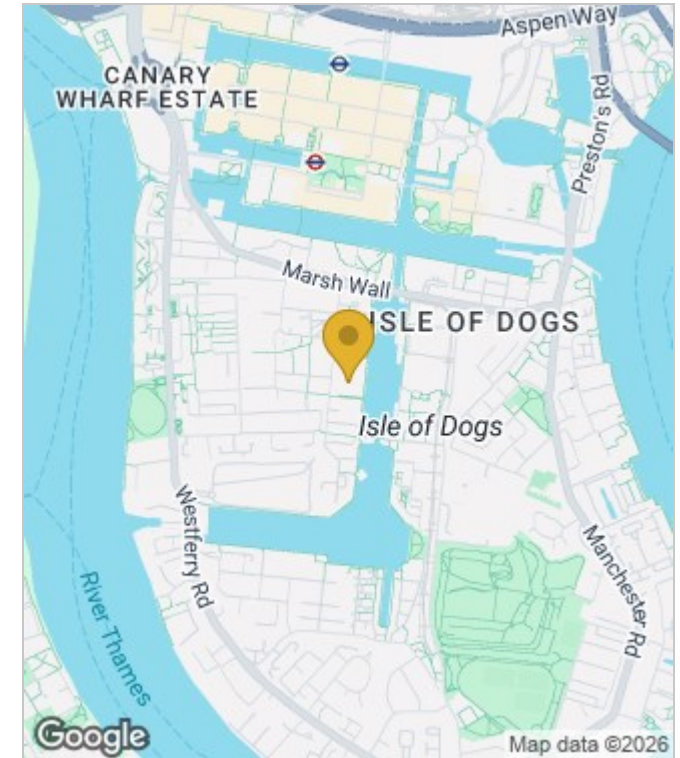


Council Tax Band: E

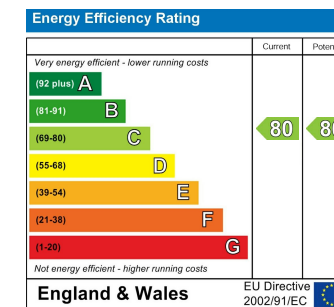
Floor Plans



Area Map



Energy Performance Graph



These particulars, whilst believed to be accurate are set out as a general outline only for guidance and do not constitute any part of an offer or contract. Intending purchasers should not rely on them as statements of representation of fact, but must satisfy themselves by inspection or otherwise as to their accuracy. No person in this firm's employment has the authority to make or give any representation or warranty in respect of the property.